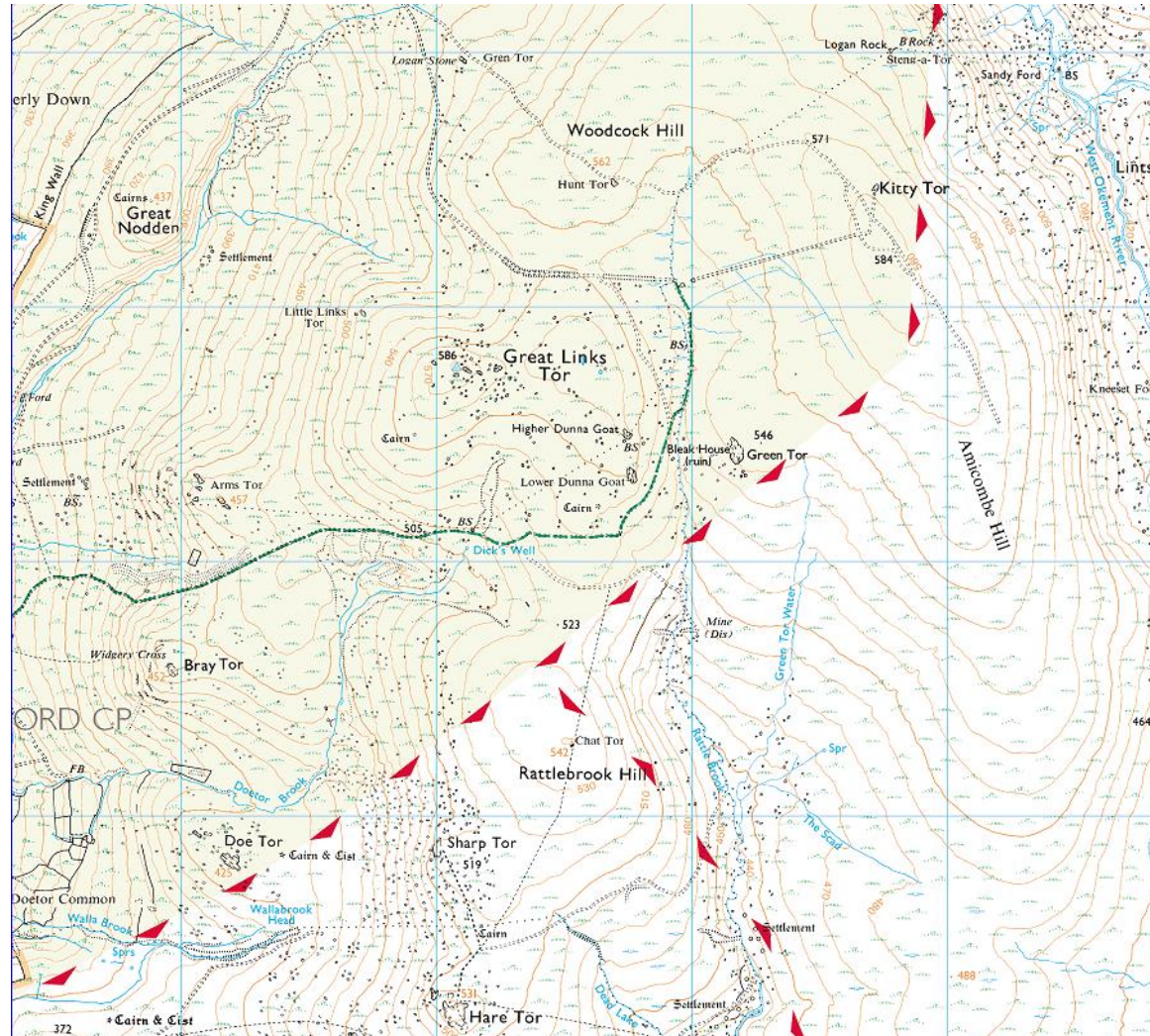
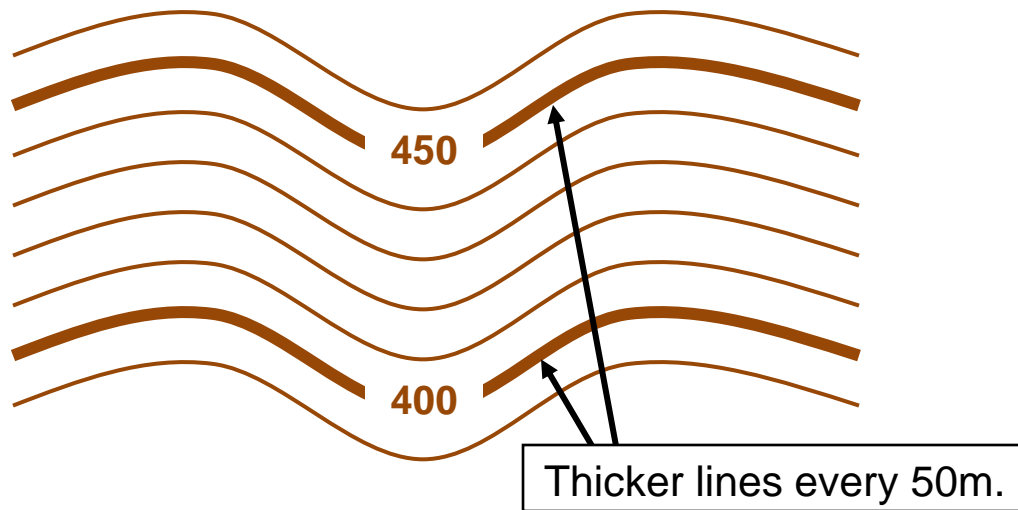


Contour Lines



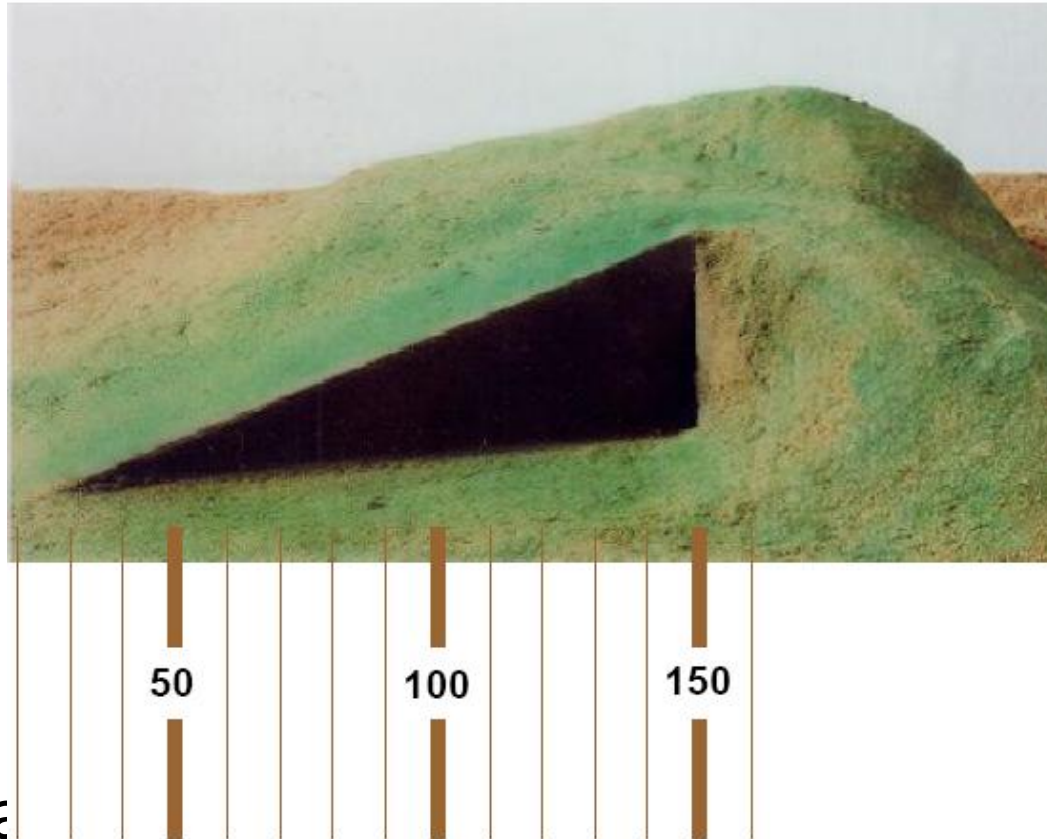
Contour Lines

- Each line is 10m apart on the ground



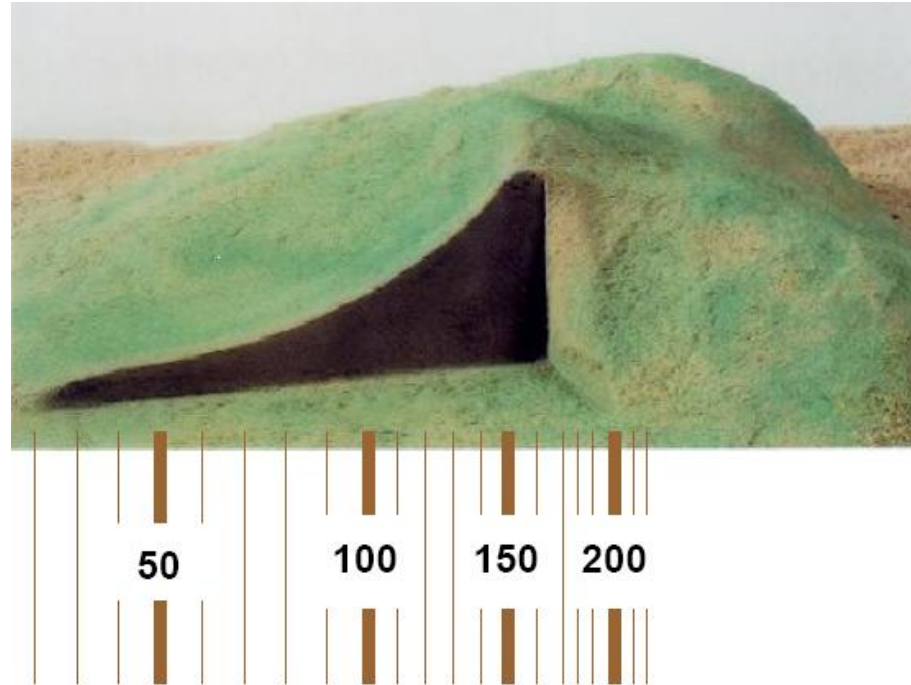
- The distance between each contour line is known as 'Vertical Interval'.
- The closer together the contour lines are, the steeper the slope.

Contour Lines – Slopes



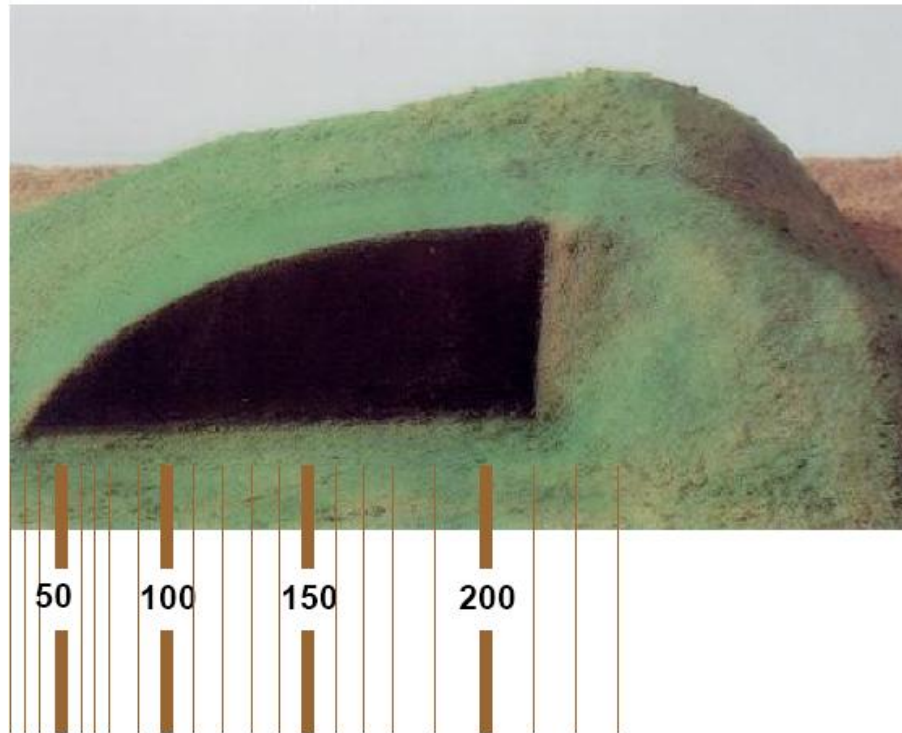
- Gradua

Contour Lines – Slopes



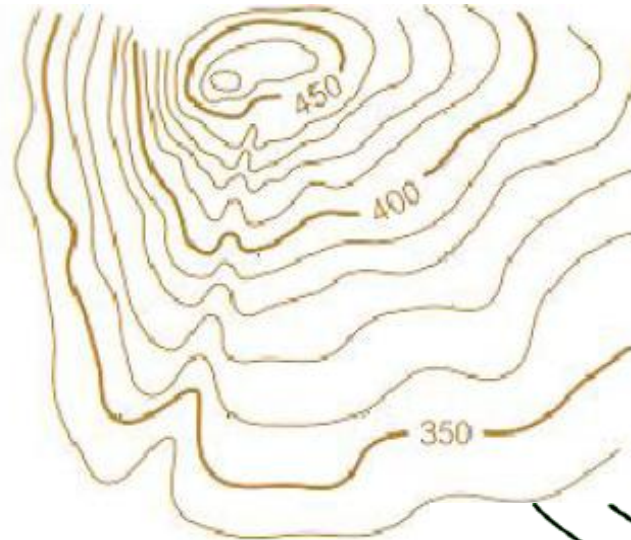
- Concave
- Curves Inwards like a Cave. If you stood on the top of a Concave slope you would be able to see the bottom.

Contour Lines – Slopes

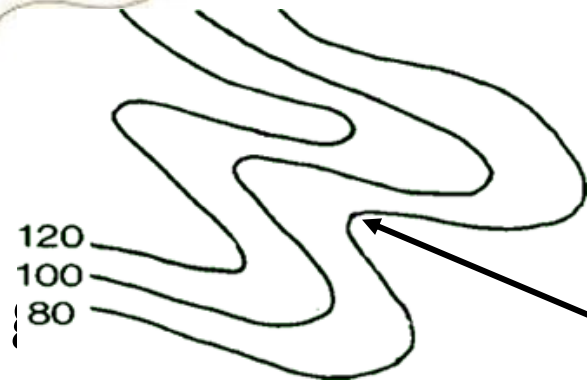


- Convex
- A Convex Slope bulges outwards. If you stood on the top of a Convex Slope you would not be able to see the bottom.

Contour Lines – Slopes



- Re – Entrant
- The contour is in a hairpin shape.
- Re – Entrants point towards higher



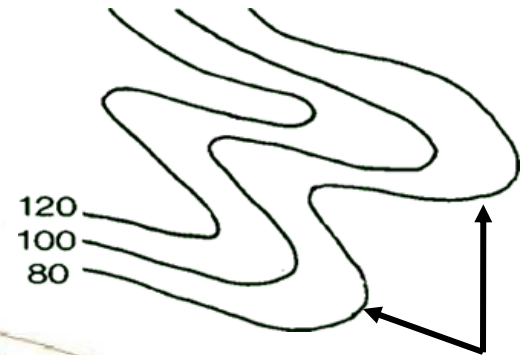
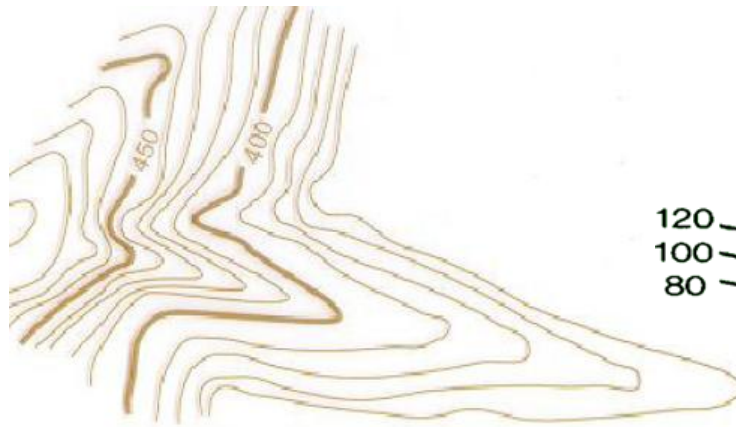
Contour Lines – Slopes



- Saddle



Contour Lines – Slopes



- Spur
- The contour is in a hairpin shape.
- Spurs point towards lower ground.

Contour Lines – Slopes



V shaped
Valley with
multiple
Re-Entrance

